



econ live –

# Instantaneous data in real-time as an addition to the econ4 software

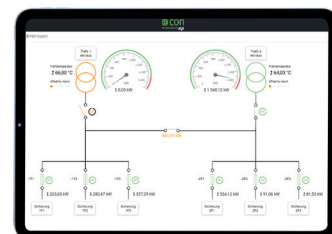
A glance at the pointer instruments of a facility immediately provides the person in charge with a picture of the current capacity utilization or the status of the process.

Such instantaneous values are now being offered by econ live, an addition to the econ4 energy management software. This means that numerous measuring values can now be displayed in real time for every user on the PC, tablet or smartphone.

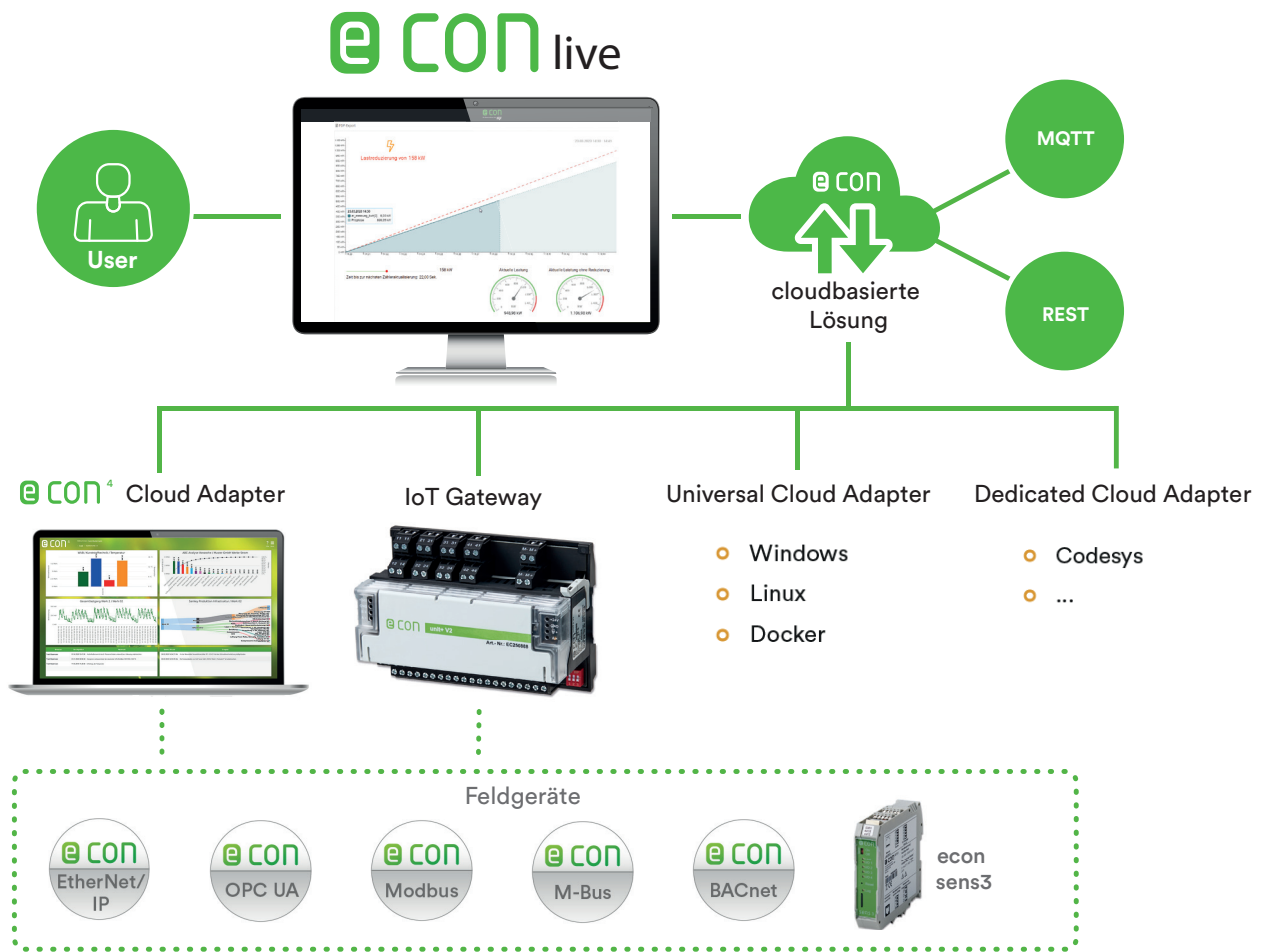
The cloud solution is intuitive to set up and operate. As a user you can design the econ live dashboard according to individual needs and wishes. To do so, simply drag the measuring values from the structure tree onto the dashboard and define the display options, e.g. a pointer instrument or a bargraph.

## A product for:

- All econ4 users, who require a display of instantaneous values
- Buildings, machinery and facilities of industry and commerce, hospitals and many more
- Flexible expandability – 25, 50, 250 and 500 data points



# easy and intuitive



## Versions

econ live is available in different configuration levels. An upgrade to a higher level is possible at any time.

- o EC\_LIVE\_25                      econ live small - 25 data points
- o EC\_LIVE\_50                     econ live starter - 50 data points
- o EC\_LIVE\_250                    econ live medium - 250 data points
- o EC\_LIVE\_500                    econ live professional - 500 data points

**Our experts are happy to assist!**

-  +49 621 290 5200
-  info@econ-solutions.de
-  www.econ-solutions.de